

SCHEDULED MEETINGS

DIRECTORS MEETINGS: 2nd Tuesday of each month at 9:30am

GENERAL MEETINGS: 3rd Thursday of April, September and November at 1:30pm

ANNUAL GENERAL MEETING: 3RD Thursday of February at 1:30pm

DIRECTORS FOR 2010

EXECUTIVE:

President	Doug Smith	604 740-5979
Past President	Wilma Lorimer	604 740-3844
1 st Vice President	Andrea Smith	604-885-7740
2 nd Vice President	Ron Atkinson	604 885-9434
Treasurer	Maureen Heaven	604 740-0843
Secretary	David Bowie	604 885-4127

DIRECTORS:

Maurice Farn	604-885-3743
Dorothy Fraser	604-885-7637
Frances Menzies	604-740-0078
Barry Yee	604-885-6208

Directors may be reached by E-mail at: ssac@dccnet.com
(Please indicate to which Director you would like the E-mail sent)

SECHELT SENIORS ACTIVITY CENTRE INFORMATION AND SCHEDULE OF ACTIVITIES



Revised January 2010

P.O. Box 564, 5604 Trail Avenue
Sechelt BC V0N 3A0

Reception: 604 885-3513

Office: 604 885-8910

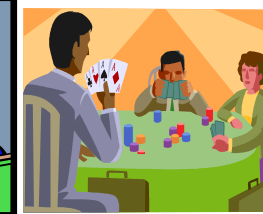
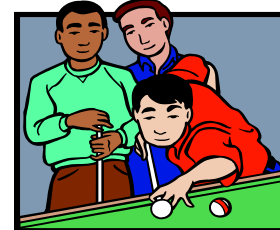
Web Page: www.secheltseniors.com

E-mail: ssac@dccnet.com

Regular Office Hours:

Winter: 9 am – 3 pm

Summer: 10 am - 2 pm



COMMITTEES FOR 2009

BUS COMMITTEE

Chair Marilyn Oseen 604 885-5235
 Co-Chair Rose Ettinger 604 885 7578
Drivers:
 Bill Quarry 604 885-6642 Barb Bell 604 885-5525
 Jim Stewart 604 883-0668 Kathleen Dufour 604 886 3935

FUND RAISING COMMITTEE

Chair Mo Farn 604-885-3743

KITCHEN COMMITTEE

Chair Karyn Burney 604-885-7575
Members: Judy Maclsaac,
 Mary Mellis
 Sharon Shorter 604-885-0822
 Cook Laura Keno 604 885-8910

LIFE MEMBERSHIP COMMITTEE

Chair Bonnie Hewitt 604 885-2440

MAINTENANCE COMMITTEE

Chair Ron Atkinson 604 885-9434

MEMBERSHIP COMMITTEE

Chair Gen Page 604-885-2338

NOMINATING COMMITTEE

Chair-Past President Wilma Lorimer 604 885 3743

PUBLICITY AND COMMUNICATION COMMITTEE

Seashell Echo/Web Page Joan Fleetham/Wilma Lorimer
 Coast Newspaper Joan Fleetham 604 885-5992
 Outside Sign Don James 604 885-0190

RECEPTION DESK COMMITTEE

Chair Julie Towle 604 885-0771

2010/2011 OPEN AND CLOSE DATES AND STATUTORY HOLIDAYS

STATUTORY HOLIDAYS	DATE	SENIOR CENTRE OFFICE	SENIOR CENTRE KITCHEN
GOOD FRIDAY	Friday, April 2	CLOSED	CLOSED
EASTER MONDAY	Monday, April 5	CLOSED	CLOSED
VICTORIA DAY	Monday, May 24	CLOSED	CLOSED
CANADA DAY	July 1	CLOSED	CLOSED
B.C. DAY	Monday, August 3	CLOSED	CLOSED
LABOUR DAY	Monday, Sept 6	CLOSED	CLOSED
KITCHEN OPENS AFTER SUMMER BREAK		OPEN	OPEN
THANKSGIVING DAY	Monday, Oct 11	CLOSED	CLOSED
REMEMBRANCE DAY	November 11	CLOSED	CLOSED
CHRISTMAS EVE DAY	Friday, Dec 24	CLOSED	CLOSED
CHRISTMAS DAY 2009	Saturday, Dec 25	CLOSED	CLOSED
Closed over Christmas	Monday, Dec 27 Tuesday, Dec 28 Wed., Dec 29 Thursday, Dec 30 Friday, Dec 31	CLOSED	CLOSED
NEW YEARS DAY 2011	Saturday, Jan. 1	CLOSED	CLOSED
New Year 2011	Monday, Jan. 3	OPEN	OPEN

PLEASE NOTE: Groups using the Centre on 'OFFICE CLOSED' dates will make arrangements with Security to open and close the building with the understanding they are responsible

ACTIVITY CHAIRPERSONS DIRECTOR LIAISON -JOAN FREMBD

Bocce

Chair Franz Erber 604 885-4590

Bridge (Duplicate/Social/Upgrade)

Chair Gwenda Thain 604 885-3417

Co-Chair Mike McCarthy 604 885-7389

Bridge Duplicate lessons

Judi Wilson 604-885-2343

Carpet Bowling

Chair Joe Clitheroe 604 885-6137

Co-Chair Anne Clitheroe 604 885-6137

Chair Acting

Chair Louise Phillips 604-885-0706

Computer Orientation Programs

Chair Phil Green 604 885 2759

Co-Chair Dave Mackenzie 604-885-7360

Crafts

Chair Jennifer Hamel 604 885-0477

Co-Chair Carol Green 604 885-2759

Cribbage

Chair Dave Grafton 604 740-9886

Co-Chair Roger Van Daele 604 885-4727

Emergency Radio Group

Chair Bob Leduc 604 885-9491

Euchre

Chair **REQUIRED**

Exercises

Leader Jacqueline Allan 604-885-3827

Chair Eva Wall 604 885-4501

Co-Chair Shirley McCaughtrie 604 885-2370

Friendship Tea and Social Hour

Chair Anne Stuart 604 885-1002

Friday Morning Talks

Chair Anne Stuart 604-885-1002

Genealogy

Chair Arlene Harmon 604-740-9848

Other contact Mary White 604-886-8179

Painting (Happy Mediums)

Chair Isabel Benson 604 885-0652

Play and Poetry Reading

Chair Marilyn Millard 604 885-2981

Poker

Chair Joan Dexter 604 885-2599

Snooker

Chair David Bowie 604 885-4127

Qi-Gong

Leader Betty Jefferies 604 885-3762

Chair Eva Wall 604 995-4501

Co-Chair Robbie Robson 604-885-7917

Quilting

Chair Shirley McCaughtrie 604 885-2370

Stamping and More (SAM)

Chair Florence Tait 604 885-9353

Square Dancing

Ron Atkinson 604 885-9434

Round Dance

Ron Atkinson 604 885-9434

Table Tennis

Chair Jenny Page 604 885-2338

Tai-Chi

Chair Donald Robb 604 885-7611

Assistant Ramon Campbell 604 885-7692

Yoga

Instructor Peg Neilon 604 885-7662

WEEKLY ACTIVITIES

Bocce (WEATHER PERMITTING)	Mon/Wed/Friday	1:00pm
Bridge	Every Saturday	1:00pm
Bridge, Duplicate	Monday & Thursday	7:00pm
Bridge lessons	Tuesday	10:00am & 1:00pm
Bridge, Update	Every Monday	1:00pm
Chair Acting	Tuesday	2:00pm
Computer Orientation	Tues/Wed/Thurs	See Board for Times
Carpet Bowling	Monday and Wednesday	1:30pm
Crafts	Thursday	9:30am
Cribbage	Thursday	7:00pm
Emergency Radio	Tuesday	9:00am
Euchre	Thursday	7:00pm
Exercises	Tuesday/Thursday	10:00am
Friendship Hour	1 st Tuesday	2:00pm
Genealogy (Computer)	3 rd Wednesday	1:00pm
Painting (Happy Mediums)	Wednesday	1:00pm
Play & Poetry Reading	Friday	10:00am
Pool/Snooker	Monday-Saturday	All Day
Poker	Monday and Friday	11:00am
Qi-Gong	Wednesday	10:00am
Quilting	Tuesday	1:00pm
Square Dancing (Round)	Postponed until further notice	
Square Dancing (Regular)	1 st and 3 rd Wednesday	7:00pm
Stamping and More	1 st & 3 rd Tuesday	7:00pm
Table Tennis	Tuesday	7:00pm
Tai Chi	Monday & Friday	9:30am
Yoga	Monday	9:30am

NOTE 1: DROP-IN USER FEES APPLY TO ALL ACTIVITIES

NOTE 2: USERS MUST BE MEMBERS

NOTE 3: MEMBERSHIP DUES ARE \$20/YEAR

COMMITTEES FOR 2009 (CONT'D)

RENTAL COMMITTEE:

Rental Coordinator Vivian Waterhouse 604 885-8910

SECURITY COMMITTEE

Chair Mike McCarthy 604 885-7389

SPECIAL EVENTS COMMITTEE

Chair **Required**

~~~~~

### BEHIND THE SCENES

**BAR** Franz Erber 604 885-4590

### **BLOOD PRESSURE READINGS**

Florence Mason, Ann Fitzau, Jan Gillies, Maxine Homes & Dorothy Fraser

### **GROCERY SLIPS**

Claytons Marjorie Van Luven 604 885-0992

IGA Marjorie Van Luven 604 885-0992

**HISTORY** Bonnie Hewitt 604 885-2440

**LIBRARY** Len Tweedie 604 740-0922

**MEMORIAL BOOK** **Required**

### **SYMPATHY AND GET WELL NOTIFICATION**

Cards Florence Tait 604 885-9353

Notice Board **Required**

### **TICKET SALES**

50/50 Draws **Required** 604 885-6137